



NOVASCHOOL[®]
education for life

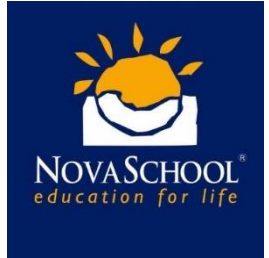
Novaschool Agrosustainable Farm

*Curricular project for
Novaschool centers*

INDEX

1. [VALUE PROPOSITION](#)
2. [SUSTAINABILITY AS AN EDUCATIONAL MODEL](#)
 - 2.1 [Ecological environmental education](#)
 - 2.2 [From the pedagogical point of view](#)
3. [CALENDAR](#)
4. [LOCATION](#)
5. [FACILITIES](#)
6. [ANIMALS](#)
7. [RESOURCES AND MATERIALS](#)
8. [ACTIVITIES](#)

AGRO-SUSTAINABLE
FARM NOVASCHOOL



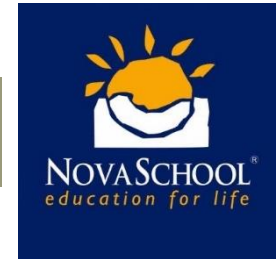
VALUE PROPOSITION

The installation of the Novaschool farm-school will reinforce the value proposition offered today by the Novaschool group, while enhancing its educational model. La Granja is located in Vega de Riarán Cártama in a privileged natural environment and with access to the highway less than a kilometer away.

In this new scenario that opens up to us, both health and environmental sciences will take more space in this new agro-sustainable farm project. That is why it has been decided that the next school year of 2022-2023 will be included in the curriculum of all Novaschool centers.

This new facility will allow us a kind of projects that will undoubtedly expand the contours of the curriculum of our centers, thus taking a firm step in everything related to sustainability as a broad concept and, incidentally, in compliance with some of the SDGs (Sustainable Development Goals) promulgated by the UN.

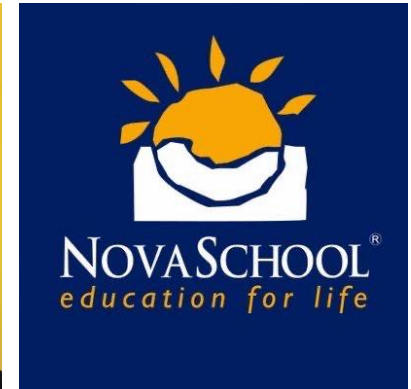
**AGRO-SUSTAINABLE
FARM NOVASCHOOL**



2. SUSTAINABILITY AS AN EDUCATIONAL MODEL NOVASCHOOL

It is of vital importance to be able to teach Novaschool students to acquire values about the environment, recycling and sustainability. In this way, the teachers of Novaschool oblige ourselves to be able to instruct our students to have sustainable habits from a very young age and, that they last over time, ergo create awareness and respect for the environment and its conservation.

In order to introduce values and knowledge in this direction in the students, it will be necessary for them to live their own experiences and relate to their environment in a direct way, but above all to experience it in the first person.



2.1 Ecological Environmental Education

All the activities that a student can carry out in a farm or agricultural and livestock farm will differ from the activities developed in the classroom of his school. Move away from technologies for a few days during the school year, thus giving you the opportunity to live incredible experiences in direct and continuous contact with nature and, incidentally, favoring your immune system.

In our farm the students will take direct contact with the animals, with the care and previous training for it: chickens, goats, lambs, pigs, donkey, horse, among others. Most of them will discover for the first time the touch of the fur of these animals or their voice. You will hear firsthand how a braying or a moo sounds, it will stop being an idea to hear them in a direct way. Collecting eggs, milking a cow/goat, riding a horse, watering the orchard, planting seeds or tilling the land, (...), will be some of the many activities that will be carried out in the facilities of the Novaschool Agro-Sustainable Farm.

All activities will have a pedagogical component. They combine classroom training, workshops and group dynamics based on projects.



2.2 From the pedagogical point of view

The approach to the rural environment through a classroom of nature allows a different conception of the teaching-learning process, because students outside the traditional context of the classroom learn while having fun and satisfying their curiosity through the possibility of observing, touching and experimenting directly, thus becoming aware of their environment. All this is done in coexistence with classmates and teachers, socializing and, in turn, learning the benefits of collaborative work. In a classroom of nature, learning is always significant, because it occurs fundamentally by discovery, in this way it is enhanced that the student builds his own learning, acquiring the competence to learn to learn.



3. CALENDAR

In the next school year of 2022-2023 it will be included in the curriculum of the educational centers Novaschool Añoreta, Sunland, Medina Elvira and Benalmádena. Each center will have 3 visits per school year and contemplating all the educational stages, except the first cycle of infant, where a set of activities according to the age will be developed.

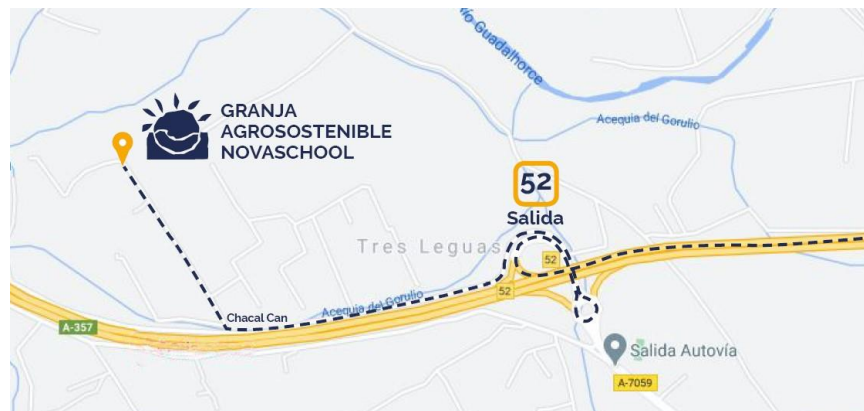
The Novaschool Medina center due to its distance from the farm the programming will be for students from 5th grade of primary school onwards.

The students will be able to enjoy all the facilities: rotate through the three classrooms and through the rest of the spaces of the farm such as the stables, chicken coops, nurseries, orchards, groves, etc.



4. LOCATION

The agro-sustainable farm of Novaschool is located in the plain of Riarán Cártama and 5 km from the Novaschool Sunland International educational center. In the vega de Riarán Cártama and 5 km from the educational center Novaschool Sunland International.

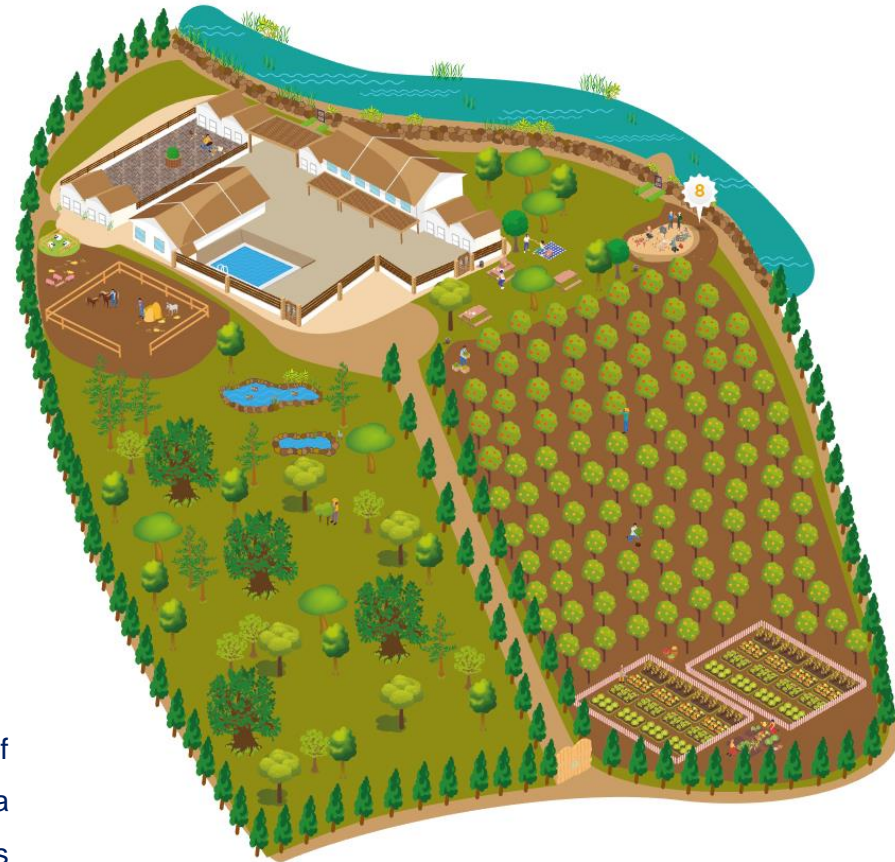


5. FACILITIES

The farm-school has 22,000 m² of surface and distributed in the following natural and educational spaces:

1. Animal farm
2. Juan Ramón Jiménez Classroom
3. Ramón y Cajal Classroom
4. Marie Curie Classroom-Laboratory
5. Office
6. Cultivation Area (orange, lemon and mandarin trees)
7. Orchard Area
8. Natural recreation area
9. Lake area
10. Swimming pool
11. Adjacent river and considered as a Special Conservation Area according to the Nature plan.

Next, we will describe each of the spaces, their resources and set of activities proposed by educational stages, pasamos a describir cada uno de los espacios, sus recursos y conjunto de actividades propuestas por etapas educativas.



5. FACILITIES

5.1 Animal Farm

The space in which the animals are found has a dimension of around 5,000 m² of spaces both indoors and outdoors.

As a summary, it has:

- 6 independent spaces, illuminated and perfectly communicated with the outdoor spaces and recreation of the animals.
- 2 chicken coops
- 1 space for dogs
- Outdoor space and fully fenced for the recreation of animals



5. FACILITIES

5.2 *Juan Ramón Jiménez Classroom*

Classroom of 40 m2 to the outside, fully roofed and equipped with:

- Slate
- 25 shovel chairs
- Group table



5.3 *Ramón y Cajal Classroom*

Classroom of 40 m2 equipped with:

- Slate
- Overhead projector
- Rear-projection screen
- 25 shovel chairs
- Storage furniture



5. FACILITIES

5.4 Marie Curie Laboratory

Classroom of 40 m2 equipped with:

- Slate
- Projection screen
- Overhead gun
- Laboratory tables
- 25 Stools up to 72cm high
- 3 sinks in the classroom itself
- Furniture shelves
- 7 Microscopes Solomark Telescope 20-1280X
- Support area with fridge, furniture, sink, oven.
- Laboratory material



5. FACILITIES

5.5 Cultivation Area

The farm has an exclusive area of around 12,000 m² of fruit trees, specifically; lemon, orange and mandarin trees.

It also has an outdoor and indoor garden area (nursery) where students can carry out all the direct activities of collection, care and cultivation.



5. FACILITIES

5.6 Natural recreation area

The farm has a natural recreational space for students, where there are picnic tables, barbecue and wood oven. This space can be used both for the development of educational activities and for picnic area and leisure moments.

In addition, it has a space full of plants of different species with a small lake.



5. FACILITIES

5.7 Fahalas river

Fahalas River adjacent to the farm and considered as a Special Conservation Area (ZEC) and regulated by the Decree 4/2015, of 13 January, declaring the Special Areas of Conservation of the European Ecological Network Natura 2000 Ríos Guadalhorce, Fahalas and Pereilas (ES6170033)

The farm has two shortcuts to the river and fully accessible for the educational activities of the farm. accessible for the educational activities of the farm.

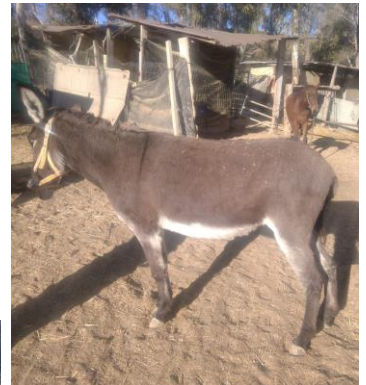
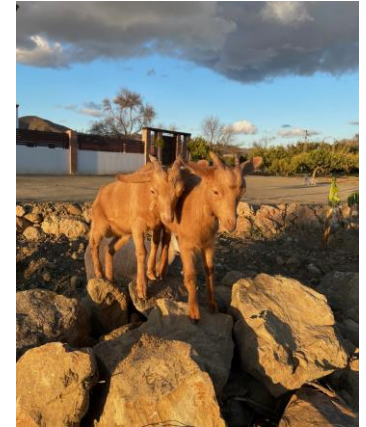


6. ANIMALS

The farm has a diversity of animals among which are:

- **Horse** (*equus ferus caballus*)
- **Donkey** (*equus africanus asinus*)
- **Goats** (*capra aegagrus hircus*)
- **Sheep** (*ovis aries*)
- **Hens/rooster** (*gallus domesticus*)
- **Pig** (*sus scrofa domestica*)
- **Dogs**
- **Fishes**
- **Ducks**

In the environment we also find a multitude of birds such as herons, marsh harrier, wild ducks, among others, as well as lizards, chameleons, insects, etc.

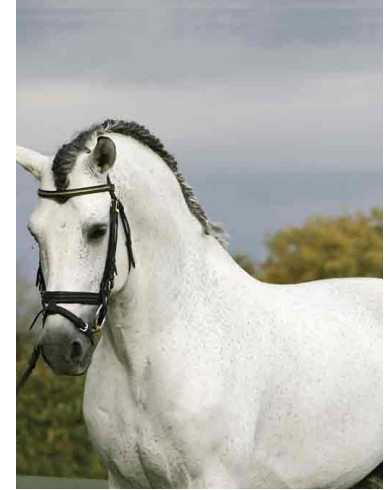


6. ANIMALS

All the spaces of the farm are identified with the basic information of each of the animals that the students will be able to visit.

They also have QR codes for secondary school students in which they can find more detailed information about each of them..

Teachers will be able to develop competitions/games/quizzes so that students put into practice the knowledge acquired about the animals on the farm.



7. OTHER RESOURCES AND MATERIALS

- Weather station
- Weathercock
- Oven
- Magnifiers
- Brushes and material for archaeology excavations
- Flat surfaces for clay or modeling activity
- Pita rope rolls
- Ropes
- Rules
- Compasses
- Long nails
- Juicers
- Jugs and glasses
- Scissors
- Ropes
- Small hoes and shovels
- Shovels
- Pegs
- Showcases exhibition
- Fixo
- White adhesive sheets
- Pincers
- White folios
- Alcohol
- Funnels
- Specimens
- Beakers
- Blender
- Pots
- Cutter
- Showers
- Rollers
- Beating glass
- Strainers
- Cubes
- metre



8. LIST OF ACTIVITIES

This list shows the initial proposal of detailed activities by department and educational stage that can be adapted and carried out

	PROPUESTA DE ACTIVIDADES	DEPARTAMENTO	ETAPA			
			EDUCACION INFANTIL	EDUCACION PRIMARIA	EDUCACION SECUNDARIA	BACHILLERATO
1	PREHISTORY WEAPONS	CIENCIAS SOCIALES	X			
2	CAVE PAINTINGS	CIENCIAS SOCIALES	X			
3	POTTERY WHEEL	CIENCIAS SOCIALES	X			
4	MOLINO DE PIEDRA	CIENCIAS SOCIALES		X	X	
5	DISCOVERY OF FIRE	CIENCIAS SOCIALES			X	
6	DIBUJAR UN MAPA DE LA GRANJA, COLOCANDO LEYENDA Y SÍMBOLOS	CIENCIAS SOCIALES		X		
7	CONSTRUCCIÓN DE UN RELOJ SOLAR	CIENCIAS SOCIALES		X		
8	LAND ART	CIENCIAS SOCIALES		X		
9	ARQUEOLOGIA	CIENCIAS SOCIALES			X	
10	COMERCIALIZAR PRODUCTOS: MARKETING, LEGISLACIÓN, ECONOMÍA.	CIENCIAS SOCIALES		X	X	X
11	HERBARIO	CIENCIAS		X	X	
12	CLASIFICACIÓN DE PLANTAS DISECCIONANDO SUS FLORES				X	X
13	COLONIAS/ESENCIAS PLANTAS AROMÁTICAS	CIENCIAS		X		
14	BARCOS CON RAMAS Y HOJAS	CIENCIAS	X			
15	COMO HACER FLORES DE COLORES	CIENCIAS	X			
16	RECOLECCIÓN Y CLASIFICACIÓN DE HOJAS	CIENCIAS		X	X	
17	OBSERVACIÓN DE FLORES. PARTES DE LA FLOR Y FUNCIONES.	CIENCIAS				X
18	CALCULO DE VOLUMENES CON AGUA.	CIENCIAS		X	X	
19	ELABORACIÓN DE PAPEL RECICLADO	CIENCIAS			X	X
20	ELABORACIÓN DE PAPEL RECICLADO II: PAPEL CON SEMILLAS	CIENCIAS		X		
21	MARIPOSARIO/INSECTARIO / GUSANOS DE SEDA/ OBSERVACIÓN INSECTOS VIVOS Y MUESTRAS.	CIENCIAS	X	X	X	X
22	IDENTIFICACIÓN VEGETACIÓN DE LA ZONA USANDO GUÍAS Y APLICACIONES DE PLANTAS.	CIENCIAS				X
23	PROCESO DE NUTRICIÓN: ALIMENTACIÓN DE LOS ANIMALES DE LA FINCA Y RECOGIDA HUEVOS GALLINAS	CIENCIAS	X	X	X	X
24	OBSERVACIÓN PANAL DE ABEJAS/ABEJORROS.	CIENCIAS		X		
25	GRANJA DE CARACOLES.	CIENCIAS		X		
26	ELABORACIÓN DE PAN Y MOLIENDA DE LA HARINA DEL GRANO DE CEREAL	CIENCIAS	X			

8. LIST OF ACTIVITIES

This list shows the initial proposal of detailed activities by department and educational stage that can be adapted and carried out.

	PROPUESTA DE ACTIVIDADES	DEPARTAMENTO	ETAPA			
			EDUCACIÓN INFANTIL	EDUCACIÓN PRIMARIA	EDUCACIÓN SECUNDARIA	BACHILLERATO
27	CUATRO DISOLUCIONES A REALIZAR CON PRODUCTOS NATURALES	CIENCIAS			X	X
28	TALLER DE BOTIQUIN NATURAL	CIENCIAS		X		
29	TALLER DE FIBRAS NATURALES	CIENCIAS			X	
30	ELABORACIÓN DE COMPOST EN COMPOSTERA, CON LOMBRICES Y UTILIZACIÓN ESTIÉRCOL ANIMALES.	CIENCIAS			X	
31	ANÁLISIS DE AGUAS	CIENCIAS			X	X
32	FABRICACIÓN PEQUEÑA DEPURADORA AGUA CON BOTELLAS RECICLADAS	CIENCIAS		X	X	
33	OBSERVACIÓN DE MUESTRAS AL MICROSCOPIO	CIENCIAS			X	X
34	HUERTO/ VIVERO	CIENCIAS	X	X	X	X
35	RECOGIDA DE NARANJAS Y LIMONES Y ELABORACIÓN DE ZUMOS Y MERMELADAS	CIENCIAS		X	X	
36	BANCO DE SEMILLAS	CIENCIAS		X	X	
37	LIMPIEZA DE RÍO. BUSQUEDA DE INDICADORES BIOLÓGICOS DE CALIDAD DE LAS AGUAS.	CIENCIAS		X	X	X
38	ESTACIÓN METEOROLÓGICA	CIENCIAS			X	X
39	REALIZACIÓN DE FÓSILES Y HUELLAS CON ESCAYOLA	CIENCIAS		X		
40	TALLER DE FOTOGRAFÍA EN LA NATURALEZA	CIENCIAS			X	X
41	REALIZACIÓN ESPANTAPAJAROS PARA HUERTO Y FRUTALES	CIENCIAS		X		
42	TALLER CULTIVO HIDROPÓNICO CON BOTELLAS RECICLADAS	CIENCIAS		X	X	
43	BUSQUEDA DE ROCAS Y MINERALES PARA SU IDENTIFICACIÓN	CIENCIAS		X	X	
44	MEDICIÓN CALIDAD DEL AIRE EN LA GRANJA	CIENCIAS			X	X
45	CONSTRUCCIÓN DE CANOA. O CABANA CON MADERAS, CAÑAS DEL RÍO	CIENCIAS			X	
46	CONSTRUCCIÓN DE CAJAS NIDO Y COMEDEROS PARA PÁJAROS	CIENCIAS			X	
47	CONSTRUCCIÓN DE COMETAS	CIENCIAS		X		
48	FABRICACIÓN QUESOS Y YOGURES	CIENCIAS		X		
49	CONOCEMOS EL PH DE NUESTROS SUELOS EN LA GRANJA ESCUELA	CIENCIAS			X	X
50	CAMINANDO POR EL RÍO	CIENCIAS			X	X
51	TALLER DE PALUDU	CIENCIAS		X	X	X
52	ESTADÍSTICA	MATEMÁTICAS Y CIENCIAS EXACTAS	X	X	X	X
53	LOS ANIMALES DE LA GRANJA	CIENCIAS	X	X	X	X

8. LIST OF ACTIVITIES

8.1 Stage of 2nd Cycle Early Childhood Education / Foundation

Proposed example of activities to be developed in the Novaschool Agrossustainable School Farm by course and educational stage.



3 YEARS OLD

- Cave paintings
- Colorful flowers
- Visit and feeding farm animals/
Insectarium/ Butterfly Garden



4 YEARS OLD

- Prehistory weapons
- Bread making
- Visit and feeding farm animals/
Insectarium/ Butterfly Garden



5 YEARS OLD

- Pottery Wheel
- Boats with branches and leaves
- Visit and feeding farm animals/
Insectarium/ Butterfly Garden

8. LIST OF ACTIVITIES

8.1 Primary Education Stage

YEAR 2

- Snail Farm
- Make cologne
- Visit and feeding farm animals/
Insectarium/ Butterfly Garden

YEAR 3

- Construction of sundial
- Natural medicine cabinet
- Visit and feeding farm animals/
Insectarium/ Butterfly Garden

YEAR 4

- Honeycombs and bumblebees
- Scarecrow
- Visit and feeding farm animals/
Insectarium/ Butterfly Garden

YEAR 5

- Fossils and footprints with plaster
- Orchard: plant and collect
- Visit and feeding farm animals/
Insectarium/ Butterfly Garden

YEAR 6

- River cleaning and search for
animals and bioindicators
- Landart
- Kites
- Visit and feeding farm animals/
Insectarium/ Butterfly Garden

YEAR 7

- Recycling paper with seeds
- Farm map and compass usage
- Grain mill
- Visit and feeding farm animals/
Insectarium/ Butterfly Garden

8. LIST OF ACTIVITIES

8.1 Secondary Education Stage (ESO)



YEAR 8

- Discovery of fire
- Bird nests
- Natural fibers workshop
- Visit and feeding farm animals/ Insectarium/ Butterfly Garden
- Archaeology

YEAR 9

- Photography workshop
- Construction of canoes with wood and reeds
- Visit and feeding farm animals/ Insectarium/ Butterfly Garden
- Archaeology

YEAR 10

- Observation of microscope samples
- Compost
- Collection of oranges and lemons: make juices and jams
- Visit and feeding farm animals/ Insectarium/ Butterfly Garden

YEAR 11

- Build cabins of reeds and materials of the farm
- Natural medicine cabinet workshop
- Visit and feeding farm animals/ Insectarium/ Butterfly Garden

8. LIST OF ACTIVITIES

8.1 High School Stage



YEAR 12

- Water and air quality analysis. Weather station
- Observation of flowers, parts of the flower and their functions. Herbarium
- Visit and feeding farm animals/ Insectarium/ Butterfly Garden

YEAR 13

- Identification of vegetation of the area. Use of guides
- Recycled paper
- Samples under the microscope
- Visit and feeding farm animals/ Insectarium/ Butterfly Garden



NOVA SCHOOL[®]
education for life