

SCHOOL TRIPS

Excursions and end of academic year trips



MULTIAVENTURA MONACHIL / ALHAMBRA DE GRANADA / PARK OF SCIENCES / HIKING / LEISURE



EDUCATIONAL VISITS

6 days / 5 nights



Novaschool has designed a unique authentic linguistic, cultural and leisure immersion program, focused on groups of students who want to learn Spanish and experience the Spanish culture first-hand. In addition to visiting and getting to know Andalusia more closely, the programme allows to explore all the cultural and leisure offer in Granada.

A linguistic and cultural immersion trip in which to learn as well as enjoy, staying at the Novaschool School Hotel, specially designed and adapted for school groups.

¿What is Included?

- Visit to landmarks
- Full board (6 days, 5 nights) that includes breakfast, lunch, snack and dinner.
- Mandatory insurance.
- Alhambra tickets with guided tour, tickets to the Park of Sciences (Museum and BioDome), guided multi-adventure trekking, activities at Novaschool Medina Elvira centre led by a team of monitors and Novaschool teachers .
- Free full board for accompanying teachers (1 teacher for every 15 students).
- Transfer from Malaga Airport - Hotel School Novaschool Medina Elvira and transport to scheduled activities.

Important information

- Accommodation in Residential school in shared rooms of 2, 3 or 4 students.
- Minimum 20 students.
- Bookings for the Alhambra 4 months in advance.
- The detailed schedule is approximate and the activities will be adapted according to season and taking into account weather conditions.
- This programme can only be hired by schools or companies, and is always destined to groups of students of the different stages of education up to 18 years old (Preschool, Primary and Secondary).
- NOT available to individual students or families.
- School institutions or companies hiring the service must have accident insurance covering for all students.

	DAY 1	DAY 2	DAY 3	DAY 4	DAY 5	DAY 6
MORNING	Pick up Transfer from Malaga Airport. Arrival at Novaschool Medina Elvira School Hotel and rooms distribution	Visit to the Granada Science Park. Museum and BioDome	Hiking in Sierra Elvira mountain range located in Granada's river plain.	Guided visit to the Alhambra in Granada	Monachil Multiadventure. Trekking in Los Cahorros includes a descent of the ravine with water hiking, pools, hanging bridges and water games. In the autumn-winter season the activities are adapted to the season (climbing, hanging bridges, hiking ..)	Packing and departure to the city of origin
AFTERNOON	Novaschool Medina Elvira Olympics	Escape room	Team Building Activities at School Hotel / Free Time	Visit to the City of Granada. Gymkhana around the city of Granada		
EVENING	Team Building Activities at School Hotel / Free Time	Team Building Activities at School Hotel / Free Time	Team Building Activities at School Hotel / Free Time	Team Building Activities at School Hotel / Free Time	Special evening with music and games	
<ul style="list-style-type: none"> • This schedule and the activities proposed can be adapted considering the needs of each specific group of students. 						

SCHOOL TRIPS

Excursions and end of academic year trips



ANDALUSIA

MULTIAVENTURA MONACHIL /
ALHAMBRA DE GRANADA / PARK
OF SCIENCES / HIKING / LEISURE

EDUCATIONAL VISITS

**6 days /
5 nights**

SCHOOL TRIPS. Excursions and end-of- study trips

6 DAYS 5 NIGHTS (ALHAMBRA DE GRANADA, GYMKHANA CITY OF GRANADA, TREKKING MULTIADVENTURE, PARK OF SCIENCES, HIKING SIERRA MEDINA ELVIRA AND RECREATIONAL ACTIVITIES)

Duration	6 days, 5 nights.	
Minimum students	20	
Schedule	<p>Day 1</p> <p>12 p.m.-2 p.m. Arrival at Hotel School Novaschool Medina Elvira, in direct transfer from Málaga Airport-Granada (the schedule will be adjusted according to each group). From 2.30 - 3 p.m. Lunch at Novaschool Medina Elvira School Hotel 3 p.m. Allocation of rooms, placement of the belongings, toilet, rest and time free. 6 p.m. Snack at the school dining room . 6.30 - 8.30 p.m. Sports Olympics . All of them led by teachers specialized in sports. 8 p.m. Shower and getting ready for dinner 9 p.m. Dinner at Novaschool Medina Elvira dining room 9.45 p.m. Team Building activities (multisport, chess, board games, role games, etc.), both indoor and outdoor, which help to improve cohesion, self - esteem and the motivation of all the participants. All of them led by educators and specialized teachers from Novaschool Medina Elvira. 11 p.m. Bedtime</p> <p>Day 2</p> <p>8 a.m. Wake-up call 8.30 a.m. Breakfast at school dining room 9.15 a.m. Departure for Park of Science 10 - 2 p.m. Guided visit to Park of Science (Museum and BioDome) 5.30 p.m. Arrival at Novaschool Medina Elvira 6 p.m. Snack at Novaschool dining room 6.30 - 8.00 p.m. Novaschool Escape Room. Adventure game that requires physical and mental skills. The students will be divided into groups that will need to solve mysteries and find clues hidden all over the school with the aim to create a magic potion. 8 p.m. Shower and getting ready for dinner. 9 p.m. Dinner 9.45 p.m. Team Building activities (multisport, chess, board games, role games, etc.), both indoor and outdoor, which help to improve cohesion, self-esteem and the motivation of all the participants. All of them led by educators and specialized teachers from Novaschool Medina Elvira School. 11 p.m. Bedtime</p> <p>Day 3</p> <p>8 a.m. Wake-up call 8.30 a.m. Breakfast at the school dining room 9 p.m. Preparation for hiking activity and collection of picnic 9.30-4.30 h. Novaschool Medina Elvira. Walk around Sierra Elvira (surroundings of the school). Sierra Elvira is a range of mountains of medium altitude located in the area of the Vega of Granada (river plain) and is one naturally beautiful environment that contains a well-preserved Mediterranean forest and large areas of pine forest. Picnic (provided by Novaschool Medina Elvira). 4.30 p.m. Arrival at Novaschool Medina Elvira and rest</p>	<p>6 p.m. Snack at Novaschool dining room 6.30 p.m. Sport activities 8 p.m. Shower and getting ready for dinner. 9 p.m. Dinner. 9.45 p.m. Team Building activities (multisport, chess, board games, role games, etc.), both indoor and outdoor, which help to improve cohesion, self - esteem and the motivation of all the participants. All of them led by educators and specialized teachers from Novaschool Medina Elvira. 11 p Bedtime</p> <p>Day 4</p> <p>8 a.m. Wake-up call 8.30 a.m. Breakfast at the school dining room 9.15 a.m. Departure for Alhambra de Granada 10 p.m. Guided tour of the Alhambra of Granada 3 p.m. PICNIC in the Gardens of the Alhambra 3.30 - 4 p.m. Rest and free time 4 - 6 p.m. Visit to the city of Granada. Gymkhana. 6.30 p.m. Snack at the school dining room 7 - 8 p.m. Sports activities 8 p.m. Rest and getting ready for dinner. 9 p.m. Dinner 9.35 p.m. Team Building activities / Free time 11 p.m. Bedtime</p> <p>Day 5</p> <p>8 a.m. Wake-up call 8.30 a.m. Breakfast at the school dining room 9.15 a.m. Departure for Monachil. Trekking in Los Cahorros includes one descent of the ravine, hiking in ponds, hanging bridges and water games. The students will have lunch in Monachil with PICNIC provided by Novaschool. (In autumn, the adventure activities will be adjusted to the season and the weather conditions (hiking, climbing, hanging bridges, ...). 6 - 6.30 p.m. Arrival at Novaschool Medina Elvira 6.30 p.m Snack at school dining room 7 - 8 p.m. Sport activities 8 p.m. Shower and getting ready for dinner. 9 p.m. Dinner 9.35 p.m.Special farewell evening with music and games 11 p.m. Bedtime</p> <p>Day 6</p> <p>8 a.m.Wake-up call 9 a.m. Breakfast at school dining room 9.45 a.m. Packing 10.15 a.m. Diplomas are awarded and farewell 11p.m. Departure to the city of origin</p>
What should bring the student body	<ul style="list-style-type: none"> • Towel and toilet accessories • Reusable water bottle • Hat and sunscreen • Snack for the first day • Sportswear for sport activities and hiking • Swimwear in spring and summer for water activities in Monachil • Comfortable clothes for the rest of the activities • Pyjamas 	

SCHOOL HOTEL

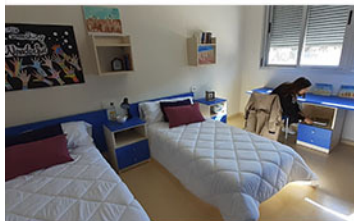
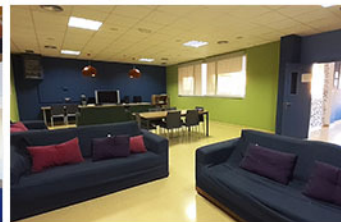
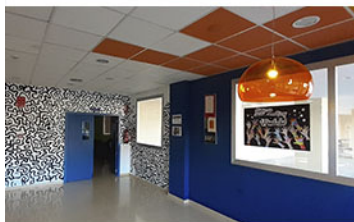
Unique location and facilities

Our Novaschool School Hotel is located in Granada (Andalucía), a unique city to the south of Spain that combines mountain and beach sites, and allows you to enjoy both walks through the historic city and trips to natural sites, lakes and to the Sierra Nevada mountain area.

It is located in the town of Atarfe, 15 minutes away from the city of Granada, in a natural environment and within a totally safe area for students and residents. The school's facilities are ideal for study, leisure and sport activities.

The school, surrounded by an extensive field of olive groves, is located very close to the natural area of the Cubillas Basin (Embalse de Cubillas), where you can perform multiple nautical and aquatic activities such as kayaking, paddle surfing, pedal boats, aquatic trampoline, etc. all of which are managed by the University of Granada.

One of the charms of our School Hotel is the proximity to the Sierra Nevada Natural Park where students will enjoy the incredible pools and waterfalls of Los Cahorros and Monachil in walks that go across bridges and below the majestic waterfalls.



Our School Hotel has an independent 3-storey building for the comfort and leisure of its residents, connected to the school premises of Novaschool Medina Elvira School where different spaces and areas for various academic uses are located. In addition, you have direct access to the sport facilities.

The accommodation area has 130 rooms distributed in different areas for boys and girls with capacity for more than 400 residents. It also has common areas for leisure and recreation, a TV room with Wi-Fi access, vending machines, offices, etc.

The rooms are spacious and bright, with views to the natural environment and with equipment for the residents' greater comfort and independence. All rooms are shared between 2, 3 or 4 people; individual beds and / or bunk beds are available.

FACILITIES

BEDROOMS

- Air conditioning
- Heating
- Wifi access
- Single beds
- Weekly bed service
- Shared bedrooms
- Private bathroom
- Sink and office area
- Study zone

COMMON ZONES

- Air conditioning
- Heating
- Wifi access
- Entertainment area with TV
- Reception service
- Laundry service
- Housekeeping
- Dining room with kitchen
- Outdoor parking

ACADEMIC AND SPORTS AREAS

- Air conditioning and heating
- Wifi access
- Digital boards
- Multipurpose classrooms
- Computer room
- 3 outdoor sports courts
- Indoor sports centre with changing rooms
- Gym

