

# SCHOOL TRIPS

Excursions and end of academic year trips

## ANDALUSIA

SPANISH LANGUAGE IMMERSION /  
35 WEEKLY HOURS OF SPANISH LANGUAGE  
AND CULTURE CLASSES AND WORKSHOPS /  
ALHAMBRA de GRANADA / GUIDED TOUR AND  
PHOTOGRAPHIC GYMKHANA/ HIKING / SPORTS

Spanish language  
immersion  
4 WEEKS



### What is Included?

- 100% linguistic immersion with Spanish language and culture activities and classes led by native teachers and leaders.
- 35 weekly hours of Spanish culture and language classes following the curriculum of the Instituto Cervantes and official certification programmes.
- Our programme of Spanish language and culture is divided into morning classes including Spanish arts and language (literature, history, culture...); Educational workshops and workshops on dance, music, history, cooking, art; Sessions of conversation in the evening on weekdays, where the student will learn while having fun with recreational activities and sports. The weekend will be dedicated to trips, leisure and cultural visits.
- Initial Level Test and final Academic Report.
- Spanish classes in small groups: maximum 12 students.
- Full board (29 days and 28 nights) that includes breakfast, lunch, snack and dinner.
- Mandatory insurance.
- Tickets to the Alhambra with a guided visit , a photographic gymkhana around the city of Granada, Hiking in Sierra Elvira, sports Olympics, recreational and leisure activities at Novaschool Hotel such as Escape Rooms, etc. All activities will be carried out in Spanish.
- Free full board for accompanying teachers of the group of students (1 for every 15 students).
- Transfer from Malaga Airport -Novaschool Medina Elvira School Hotel and transport to scheduled trips on weekends.

### Important information

- Accommodation in Residential in shared rooms of 2, 3 or 4 students.
- Minimum 20 students.
- Bookings for the Alhambra 4 months in advance.
- The detailed schedule is approximate and the activities will be adapted according to season and taking into account weather conditions.
- This programme can only be hired by schools or companies, and always destined to groups of students of the different stages of education up to 18 years (Preschool, Primary and Secondary).
- NOT available to individual students or families.
- School institutions or companies hiring the service must have accident insurance covering for all students.

Novaschool has designed a unique program of language and culture immersion and leisure, targeted to groups of students who want to visit and learn more about Andalusia, exploring all the cultural and leisure offer of Granada while learning Spanish.

A cultural trip to learn and enjoy staying in the Novaschool School Hotel, specially designed and adapted for school groups.

		Monday to Friday	Saturday	Sunday
WEEK 1	MORNING	Arrival at Novaschool Medina Elvira School Hotel and room distribution.	Cultural visit to the city of Granada with Photographic Gymkhana	Hiking in Sierra Elvira - mountain range in Granada's river plain.
	AFTERNOON	Welcome Escape Room	Team Building activities at School Hotel	Sports / Free time / Study time
	EVENING	Free time	Free time	Free time
WEEK 2	MORNING	Spanish classes	Orientation games in Sierra Elvira, mountain range in the Granada river plain.	
	AFTERNOON	<ul style="list-style-type: none"> <li>• Workshops</li> <li>• Conversation and study sessions</li> <li>• Sport activities</li> </ul>	Sports	Sports / Free time / Study time
	EVENING	Free time	Free time	Free time
WEEK 3	MORNING	Spanish classes	Guided visit to the Alhambra in Granada	Hiking in Sierra Elvira
	AFTERNOON	<ul style="list-style-type: none"> <li>• Workshops and</li> <li>• Conversation and study sessions</li> <li>• Sport activities</li> </ul>		Sport Activities / Free Time / Study
	EVENING	Free time	Free time	Free time
WEEK 4	MORNING	Spanish classes	Sports Olympics	Packing and Departure to the city of origin
	AFTERNOON	<ul style="list-style-type: none"> <li>• Workshops and</li> <li>• Conversation and study sessions</li> <li>• Sport activities</li> </ul>	Free time	
	EVENING	Free time	Special Evening with music and games	

# SCHOOL TRIPS

Excursions and end of academic year trips



## ANDALUSIA

SPANISH LANGUAGE IMMERSION /  
35 WEEKLY HOURS OF SPANISH LANGUAGE  
AND CULTURE CLASSES AND WORKSHOPS /  
ALHAMBRA de GRANADA / GUIDED TOUR AND  
PHOTOGRAPHIC GYMKHANA/ HIKING / SPORTS

Spanish language  
immersion  
4 WEEKS

### SCHOOL TRIPS

Excursions and end-of- study trips

4 WEEKS (SPANISH LANGUAGE IMMERSION, ALHAMBRA DE GRANADA, VISIT TO THE CITY OF GRANADA WITH GYMKHANA, HIKING, SPORTS AND LEISURE)

4-week school camp led by native Spanish teachers, mostly Novaschool's teaching staff who teach the Spanish curriculum, with small groups and individualized attention. All activities in Spanish.

Duration	4 weeks (29 days 28 nights)	
Minimum number of students	20	
Schedule	<p><b>BUSINESS DAYS (MONDAY TO FRIDAY)</b></p> <p><b>ARRIVAL DAY</b></p> <p>12 - 2 p.m. Arrival at Hotel School Novaschool Medina Elvira, direct transfer from Málaga Airport-Granada (the schedule will be adjusted according to the group's arrival time).</p> <p>Between the 2.30 and 3 pm. Lunch at Novaschool Medina Elvira school</p> <p>3.30 p.m. Distribution of rooms, settling, rest and free time</p> <p>5.30 p.m. Initial evaluation test</p> <p>6.30 p.m. Snack at school dining room .</p> <p>6.30-8.30 p.m. Sports Olympics. All sport activities are led by sports teachers.</p> <p>8.30 p.m. Shower and getting ready for dinner</p> <p>9.00 p.m. Dinner at Novaschool Medina Elvira dining room</p> <p>9.45 p.m. Free time in school facilities</p> <p>11 p.m. Bedtime</p> <p><b>MONDAY TO FRIDAY</b></p> <p>8 a.m. Wake-up call</p> <p>8.30 a.m. Breakfast at school dining room</p> <p>9 a.m. Spanish classes (with 30 minute break)</p> <p>1 p.m. Tutoring</p> <p>2 p.m. Lunch at school dining room</p> <p>2.30 p.m. Free time and rest.</p> <p>3.30-4.30 p.m. Workshops:</p> <ul style="list-style-type: none"> <li>Spanish cuisine</li> <li>Spanish culture</li> <li>Artistic activities</li> <li>Dancing</li> <li>Painting</li> <li>Cinema</li> <li>Theatre</li> <li>Orientation</li> </ul> <p>4.30 - 5.30 p.m. Spanish conversation sessions</p> <p>5.30 p.m. Rest</p> <p>6 p.m. Afternoon snack</p> <p>6.30-8.30 p.m. Sport activities</p> <p>8.30 p.m. Tidying up</p> <p>9.00 p.m. Dinner</p> <p>9.30 p.m. Leisure and team-building activities (multisport, chess, board games, role games etc ..), both indoor and outdoor, which help to improve group cohesion and all participants' self-esteem and motivation. All activities will be led by specialized Novaschool Medina Elvira teachers and leaders.</p> <p>10.30 p.m. Bedtime</p>	<p><b>WEEKENDS</b></p> <p>8.00 a.m. Wake-up call</p> <p>8.30 a.m. Breakfast at school dining room</p> <p>9.15 a.m. Departure for day's cultural or leisure activity</p> <p>Saturdays</p> <p>Week 1: Visit to the City of Granada with Photographic Gymkhana</p> <p>Week 2: Orientation games in Sierra Elvira. Week 3 : Guided visit to the Alhambra in Granada. Week 3: Sports Olympics</p> <p>All Saturday trips include PICNIC provided by Novaschool Medina Elvira School Hotel</p> <p>Sundays</p> <p>Week 1 : Hiking in Sierra de Medina Elvira</p> <p>Week 2: Games sports</p> <p>Week 3: Hiking in Sierra de Medina Elvira</p> <p>Week 4: Departure City of Origin</p> <p>On Sundays, after the hiking trip, students will return to Novaschool Medina Elvira School Hotel for lunch. Otherwise, a PICNIC will be provided by Novaschool Medina Elvira School Hotel.</p> <p>6.30 p.m. Arrival at Novaschool Medina Elvira (trips involving later arrivals will include a snack)</p> <p>6.30 p.m. Snack in school dining room</p> <p>7 - 8 p.m. Free time / Sport activities or study</p> <p>8 p.m. Shower and getting ready for dinner</p> <p>9 p.m. Dinner</p> <p>9.35 p.m. Free time . On the last evening there will be a special session with music and games led by the team of teachers at Novaschool Medina Elvira.</p> <p>11 p.m. Bedtime</p> <p><b>LAST DAY</b></p> <p>8 a.m. Wake-up call</p> <p>9 a.m. Breakfast at school dining room</p> <p>9.45 a.m. Packing</p> <p>10.15 a.m. Diplomas are awarded and farewell</p> <p>11 p.m. Departure to the city of origin</p>
What students should bring	<ul style="list-style-type: none"> <li>Towel and toilet accessories</li> <li>Reusable water bottle. Hat and sunscreen</li> <li>Sportswear for sport activities and hiking</li> <li>Comfortable clothes for the rest of the activities</li> <li>Pyjamas</li> </ul>	

# SCHOOL HOTEL

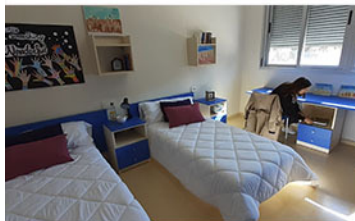
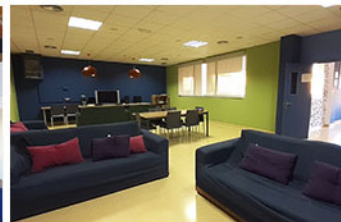
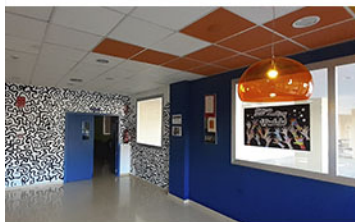
*Unique location and facilities*

Our Novaschool School Hotel is located in Granada (Andalucía), a unique city to the south of Spain that combines mountain and beach sites, and allows you to enjoy both walks through the historic city and trips to natural sites, lakes and to the Sierra Nevada mountain area.

It is located in the town of Atarfe, 15 minutes away from the city of Granada, in a natural environment and within a totally safe area for students and residents. The school's facilities are ideal for study, leisure and sport activities.

The school, surrounded by an extensive field of olive groves, is located very close to the natural area of the Cubillas Basin (Embalse de Cubillas), where you can perform multiple nautical and aquatic activities such as kayaking, paddle surfing, pedal boats, aquatic trampoline, etc. all of which are managed by the University of Granada.

One of the charms of our School Hotel is the proximity to the Sierra Nevada Natural Park where students will enjoy the incredible pools and waterfalls of Los Cahorros and Monachil in walks that go across bridges and below the majestic waterfalls.



Our School Hotel has an independent 3-storey building for the comfort and leisure of its residents, connected to the school premises of Novaschool Medina Elvira School where different spaces and areas for various academic uses are located. In addition, you have direct access to the sport facilities.

The accommodation area has 130 rooms distributed in different areas for boys and girls with capacity for more than 400 residents. It also has common areas for leisure and recreation, a TV room with Wi-Fi access, vending machines, offices, etc.

The rooms are spacious and bright, with views to the natural environment and with equipment for the residents' greater comfort and independence. All rooms are shared between 2, 3 or 4 people; individual beds and / or bunk beds are available.

## FACILITIES

### BEDROOMS

Air conditioning  
Heating  
Wifi access  
Single beds  
Weekly bed service  
Shared bedrooms  
Private bathroom  
Sink and office area  
Study zone

### COMMON ZONES

Air conditioning  
Heating  
Wifi access  
Entertainment area with TV  
Reception service  
Laundry service  
Housekeeping  
Dining room with kitchen  
Outdoor parking

### ACADEMIC AND SPORTS AREAS

Air conditioning and heating  
Wifi access  
Digital boards  
Multipurpose classrooms  
Computer room  
3 outdoor sports courts  
Indoor sports centre with changing rooms  
Gym

